



Enhancements to BMP implementation in FRRouting

Maxence YOUNSI, INSA Lyon - maxence.younsi@insa-lyon.fr

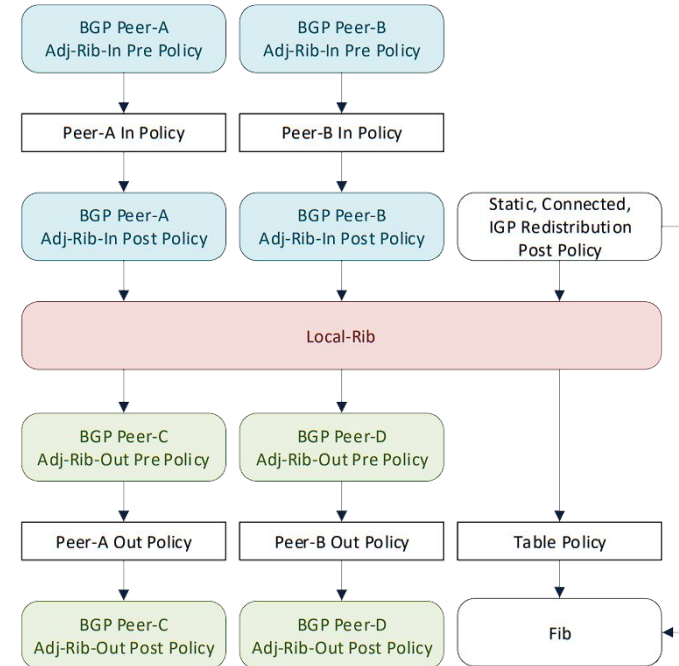
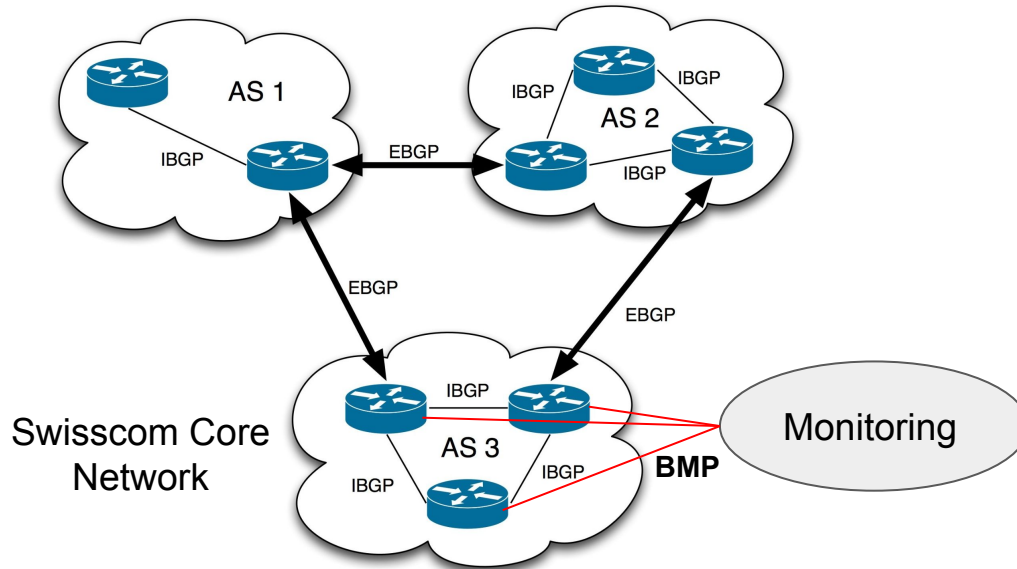
Pierre FRANCOIS, INSA Lyon - pierre.francois@insa-lyon.fr

Thomas GRAF, Swisscom - thomas.graf@swisscom.com

Getting Visibility into BGP RIBs with BMP

Border Gateway Protocol (BGP) and BGP Monitoring Protocol (BMP)

Internet Network



Getting Visibility into BGP RIBs with BMP

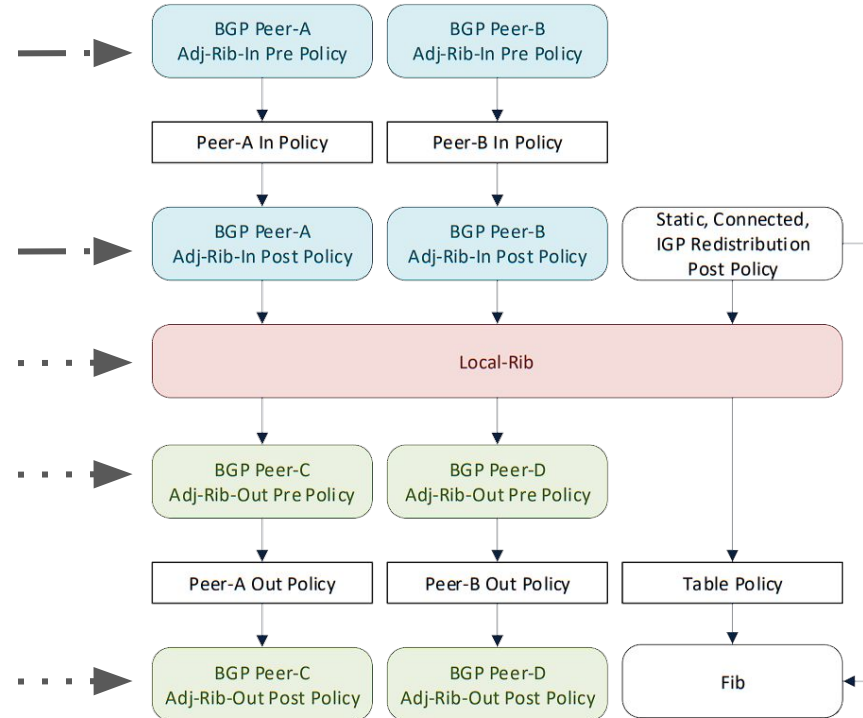
BGP Monitoring Protocol (BMP)

- Allows to monitor the BGP behaviour of a router
 - Received Paths (BMP Adj-RIB-In) -- RFC 7854
 - Best Path (BMP Loc-RIB) -- RFC 9069
 - Advertised Paths (BMP Adj-RIB-Out) -- RFC8671
 - Statistics
- FRRouting
 - Basic support of BMP
- Project
 - Support all RFC's
 - Support of ongoing GROW WG items
 - Wireshark dissectors

BMP in FRRouting

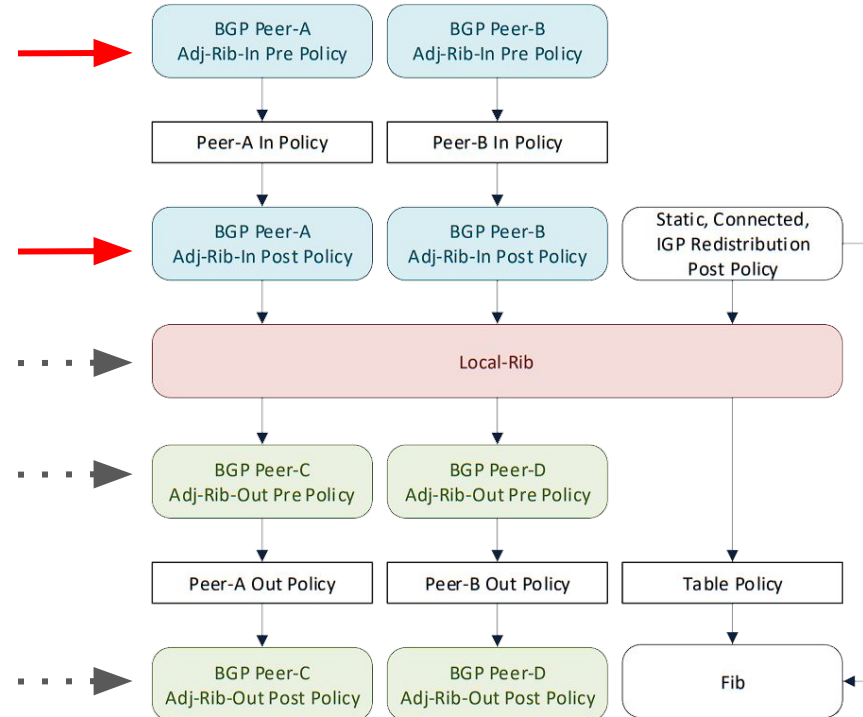
Initial status

- RFCs
 - Adj-RIB-In
 - No Add-Path Support
 - Loc-RIB
 - No Support
 - Adj-RIB-Out
 - No Support
- Drafts
 - BMPv4
 - No Support
 - Path Marking
 - No Support



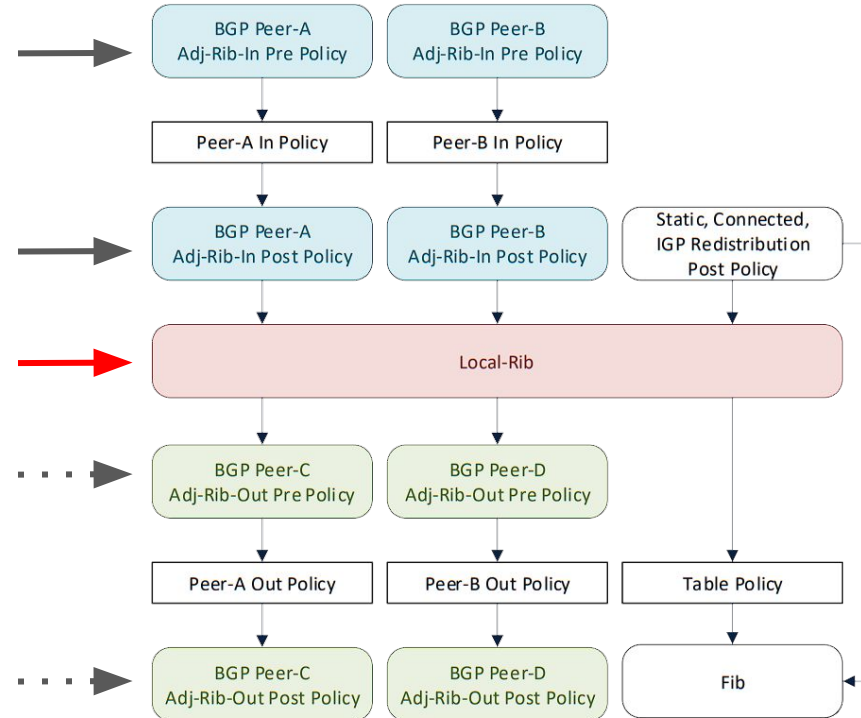
BMP Adj-RIB-In -- RFC 7854

- Added Add-Path support
- Add-Path RX ID in Adj-In NLRI
- VRF Identification



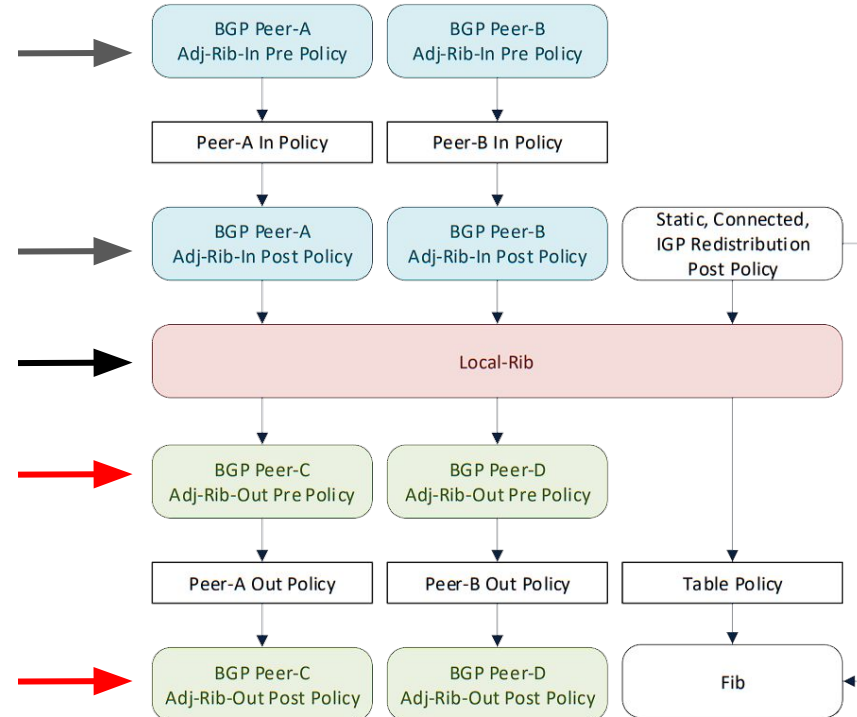
Best Path (BMP Loc-RIB) -- RFC 9069

- Now supported
- Supports BGP Multipath
- Supports VRF identification



Advertised Paths (BMP Adj-RIB-Out) -- RFC8671

- Now supported
 - Supports BGP Add-Path
 - Supports VRF identification



BMP v4 TLV

draft-ietf-grow-bmp-tlv

- Added TLV for BGP PDUs in Route Monitoring Messages
- Added Group TLV code, not leveraged by a feature
- Added Capability TLV code, not leveraged by a feature

```
▼ BGP Monitoring Protocol, Type Route Monitoring
  Version: 4
  Length: 195
  Type: Route Monitoring (0)
  ▶ Per Peer Header
  ▼ BMPv4 TLV: BGP_PDU
    Type: BGP_PDU (4)
    Length: 122
    Index: 0
    ▼ Value: ff ff ff ff ff ff ff ff ff ff ff ff ff ff ff ff 00 7a 02 00 00 00 63 40 ...
      ▼ Border Gateway Protocol - UPDATE Message
        Marker: ffffffffffffffffffffffffffffffff
        Length: 122
        Type: UPDATE Message (2)
        Withdrawn Routes Length: 0
        Total Path Attribute Length: 99
        ▶ Path attributes
      ▶ BMPv4 TLV: VRF_TABLE_NAME
      ▶ BMPv4 TLV: BGP_PATH_STATUS
```


BMP Path Marking

Path status and Reason codes

- Added most status and all reason codes
- Missing
 - Invalid ROV
 - Backup
 - Best-external

```
▼ BMPv4 TLV: BGP_PATH_STATUS
  Type: BGP_PATH_STATUS (9)
  Length: 4
  Index: 0
  ▼ ..... 0000 1010 = Status: 0x0a, best, primary
    .... ..0 = invalid: Not set
    .... ..1 = best: Set
    .... 0.. = non_selected: Not set
    .... ..1 ... = primary: Set
    .... ..0. ... = backup: Not set
    .... .0.. ... = non_installed: Not set
    .... 0... ... = best_external: Not set
    ...0 ..... = addpath: Not set
    ..0. .... = filtered_in: Not set
    .0.. .... = filtered_out: Not set
    0... .... = invalid_rov: Not set
```



- BMP v4 TLV <https://github.com/network-analytics/wireshark/tree/draft-ietf-grow-bmp-tlv>
- BMP Path-Marking
<https://github.com/network-analytics/wireshark/tree/draft-cppy-grow-bmp-path-marking-tlv>

References

FRRouting Links



- BMP Local-RIB Pull Request <https://github.com/FRRouting/frr/pull/11800>
- BMP Adj-RIB-Out <https://github.com/mxyns/frr/tree/bmp-riboutmon>
- BMP Multi-Path <https://github.com/mxyns/frr/tree/bmp-multipath>
- BMP v4 TLV <https://github.com/mxyns/frr/tree/bmp-draft-tlv>
- BMP Path-Marking <https://github.com/mxyns/frr/tree/bmp-draft-path-marking>
- BMP Loc-RIB Peer <https://github.com/mxyns/frr/tree/bmp-draft-francois-grow-bmp-loc-peer>
- BMP Fix Per-Peer Header Ports <https://github.com/FRRouting/frr/pull/13198>



Thanks !

Maxence YOUNSI, INSA Lyon - maxence.younsi@insa-lyon.fr

Pierre FRANCOIS, INSA Lyon - pierre.francois@insa-lyon.fr

Thomas GRAF, Swisscom - thomas.graf@swisscom.com

Best Path (BMP Loc-RIB) -- RFC 9069

Main Challenge

- Collection issue
 - Received Add-Path IDs are unique for a BGP peer
 - RFC9069 does **not** provide the Peer Address
- Possible solutions
 - Regenerate Path-IDs unique for BMP but lose correlation with BGP
 - Provide Peer Address with `draft-francois-grow-bmp-loc-peer`

Advertised Paths (BMP Adj-RIB-Out) -- RFC8671

Implementation challenges

- FRRouting does not retain RIB-out Pre-Policy paths
- ⇒
- Some statistics are not possible without relevant resource impact

